

**APC/Cy7 anti-human CD66b**

**Catalog # / Size:** 2125625 / 25 tests  
2125630 / 100 tests

**Clone:** G10F5

**Isotype:** Mouse IgM, κ

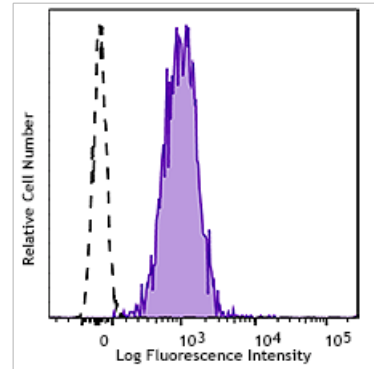
**Reactivity:** Human, Non-human primate

**Preparation:** The antibody was purified by affinity chromatography and conjugated with APC/Cy7 under optimal conditions. The solution is free of unconjugated APC/Cy7 and unconjugated antibody.

**Formulation:** Phosphate-buffered solution, pH 7.2, containing 0.09% sodium azide and 0.2% (w/v) BSA (origin USA).

**Workshop Number:** VI MA81

**Concentration:** Lot-specific



Human peripheral blood granulocytes were stained with CD66b (clone G10F5) APC/Cy7 (filled histogram) open histogram depicts unstained cells.

**Applications:**

**Applications:** Flow Cytometry

**Recommended Usage:** Each lot of this antibody is quality control tested by immunofluorescent staining with flow cytometric analysis. For flow cytometric staining, the suggested use of this reagent is 5 µl per million cells or 5 µl per 100 µl of whole blood. It is recommended that the reagent be titrated for optimal performance for each application.

**Application Notes:** Additional reported applications (for the relevant formats) include: immunohistochemical staining of acetone-fixed frozen and formalin-fixed paraffin-embedded tissue sections.

**Application References:** 1. Kuijpers T, *et al.* 1993. *J. Immunol.* 151:4934.  
2. Kuroki M, *et al.* 1992. *J. Leuk. Biol.* 52:551.

**Description:** CD66b is a 95-100 kD glycosylphosphatidylinositol (GPI)-linked protein also known as CD67, CGM6, and NCA-95. CD66b is a member of the immunoglobulin superfamily, carcinoembryonic antigen (CEA)-like subfamily. CD66b, expressed on granulocytes, has been reported to induce activation in neutrophils and to be involved in heterophilic adhesion with CD66c.

**Antigen References:** 1. Kuijpers T, *et al.* 1993. *J. Immunol.* 151:4934.  
2. Kuroki M, *et al.* 1992. *J. Leuk. Biol.* 52:551.