

Alexa Fluor® 700 anti-human Ig light chain λ

Catalog # / Size: 2183160 / 100 tests
2183155 / 25 tests

Clone: MHL-38

Isotype: Mouse IgG2a, κ

Immunogen: Human Ig cocktail

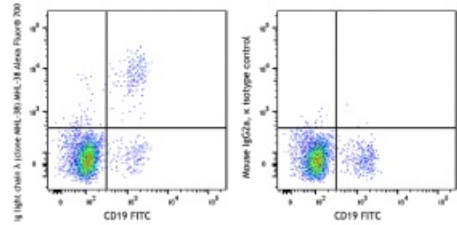
Reactivity: Human, Non-human primate, Other

Preparation: The antibody was purified by affinity chromatography and conjugated with Alexa Fluor® 700 under optimal conditions. The solution is free of unconjugated Alexa Fluor® 700.

Formulation: Phosphate-buffered solution, pH 7.2, containing 0.09% sodium azide and 0.2% (w/v) BSA (origin USA).

Workshop Number: VI CD72.1

Concentration: Lot-specific



Human peripheral blood lymphocytes were costained with CD19 FITC and Ig Light Chain λ (clone MHL-38) Alexa Fluor® 700 (left) or mouse IgG2a, κ Alexa Fluor® 700 isotype control (right).

Applications:

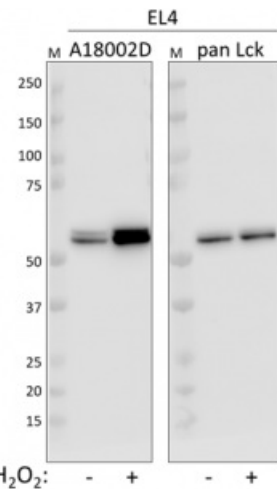
Applications: Flow Cytometry

Recommended Usage: Each lot of this antibody is quality control tested by immunofluorescent staining with flow cytometric analysis. For flow cytometric staining, the suggested use of this reagent is 5 μL per million cells in 100 μL staining volume or 5 μL per 100 μL of whole blood.

* Alexa Fluor® 700 has a maximum emission of 719 nm when it is excited at 633 nm / 635 nm. Prior to using Alexa Fluor® 700 conjugate for flow cytometric analysis, please verify your flow cytometer's capability of exciting and detecting the fluorochrome.

Application Notes: Clone MHL-38 is not compatible with Human TruStain FcX (Fc Receptor Blocking Solution), Catalog #422301/422302.

Application References: 1. Hanson DA, *et al.* 1999. *Mol. Immunol.* 36:413.
2. Spada FM, *et al.* 2000. *J. Exp. Med.* 191:937.



Con A+IL-2-stimulated (3 days) C57BL/6 mouse splenocytes were fixed and permeabilized with 70% ethanol at -20°C for an hour and stained with DAPI and Ki-67 (clone 11F6) FITC (left), or rat IgG2b, κ FITC isotype control (right).

Description: The MHL-38 antibody reacts with both soluble and membrane human immunoglobulin light chain lambda (λ). It does not react with human immunoglobulin light chain kappa (κ) or heavy chains. The MHL-38 antibody can be used as primary or secondary reagent for immunofluorescent staining or ELISA analysis.

Antigen
References:

1. Krensky AM. 2000. *Biochem. Pharmacol.* 59:317.
2. Deng A, et al. 2005. *J. Immunol.* 174:5243.
3. Kaspar AA, et al. 2001. *J. Immunol.* 167:350.
4. Krensky AM and Clayberger C. 2009. *Tissue Antigens* 73:193.