

**Spark Violet™ 538 anti-human CD15 (SSEA-1)**

**Catalog # / Size:** 2215275 / 25 tests

**Clone:** W6D3

**Isotype:** Mouse IgG1,  $\kappa$

**Immunogen:** WERI-RB-1 retinoblastoma cell line

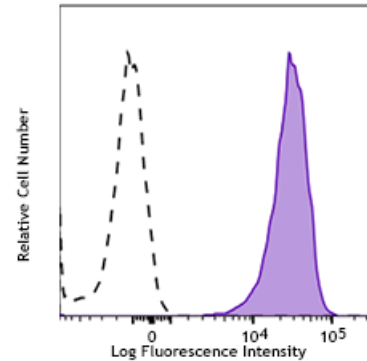
**Reactivity:** Human

**Preparation:** The antibody was purified by affinity chromatography and conjugated with Spark Violet™ 538 under optimal conditions.

**Formulation:** Phosphate-buffered solution, pH 7.2, containing 0.09% sodium azide and 0.2% (w/v) BSA (origin USA)

**Workshop Number:** HCDM listed

**Concentration:** Lot-specific



Human peripheral blood lymphocytes were stained with CD15 (SSEA-1) (clone W6D3) Spark Violet™ 538 (filled histogram) or mouse IgG1,  $\kappa$  Spark Violet™ 538 isotype control (open histogram).

**Applications:**

**Applications:** Flow Cytometry

**Recommended Usage:** Each lot of this antibody is quality control tested by immunofluorescent staining with flow cytometric analysis. For flow cytometric staining, the suggested use of this reagent is 5  $\mu$ L per million cells in 100  $\mu$ L staining volume or 5  $\mu$ L per 100  $\mu$ L of whole blood. It is recommended that the reagent be titrated for optimal performance for each application.

\* Spark Violet™ 538 has a maximum excitation of 396 nm and a maximum emission of 538 nm.

**Description:** CD15 is 3-fucosyl-N-acetyllactosamine (3-FAL) also known as Lewis X, 3-FAL, X-hapten, and SSEA-1. CD15 is expressed on granulocytes and monocytes. It has also been shown to be expressed on Langerhans cells. CD15 has been implicated in adhesion as well as chemotaxis, phagocytosis, and bactericidal activity.

**Antigen References:** 1. Stocks SC, et al. 1990. *Biochem. J.* 268:275.