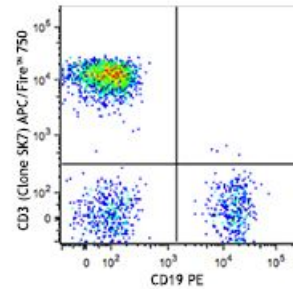


**APC/Fire™ 750 anti-human CD3**

**Catalog # /** 2324195 / 25 tests  
**Size:** 2324200 / 100 tests  
**Clone:** SK7  
**Isotype:** Mouse IgG1, κ  
**Immunogen:** Human T cells from a T-ALL patient.  
**Reactivity:** Human, Other  
**Preparation:** The antibody was purified by affinity chromatography and conjugated with APC/Fire™  
**Formulation:** Phosphate-buffered solution, pH 7.2, containing 0.09% sodium azide and 0.2% (w/v) BSA (origin USA).  
**Workshop Number:** 750 under optimal conditions.  
**Concentration:** Lot-specific



Human peripheral blood lymphocytes were stained with CD19 PE and CD3 (clone SK7) APC/Fire™ 750 (top) or mouse IgG1, κ APC/Fire™ 750 isotype control (bottom).

**Applications:**

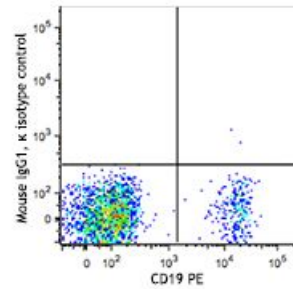
**Applications:** Flow Cytometry

**Recommended Usage:** Each lot of this antibody is quality control tested by immunofluorescent staining with flow cytometric analysis. For flow cytometric staining, the suggested use of this reagent is 5 µl per million cells in 100 µl staining volume or 5 µl per 100 µl of whole blood.  
 \* APC/Fire™ 750 has a maximum excitation of 650 nm and a maximum emission of 787 nm.

**Application Notes:** Additional reported application (for the relevant formats) include: immunohistochemical staining of frozen tissue sections<sup>4,5,8</sup>, immunofluorescent staining<sup>6</sup>, and Western blotting<sup>3</sup>.

**Application References:**

1. Kan EA, *et al.* 1983. *J. Immunol.* 131:536.
2. Wood GS, *et al.* 1985. *Am. J. Pathol.* 120:371.
3. Van Dongen JJM, *et al.* 1988. *Blood* 71:603. (WB)
4. Haringman JJ, *et al.* 2005. *Arthritis Res. Ther.* 7:R862. (IHC)
5. Carbone A, *et al.* 1999. *Blood* 93:2319. (IHC)
6. Goval JJ, *et al.* 2006. *J. Histochem. Cytochem.* 54:75. (IF)
7. Rutjens E, *et al.* 2007. *J. Immunol.* 178:1702.
8. Kap Y, *et al.* 2009. *J. Histochem. Cytochem.* 57:1159. (IHC)
9. Yoshino N, *et al.* 2000. *Exp. Anim. (Tokyo)* 49:97. (FC)



Human peripheral blood lymphocytes were stained with anti-human CD4 FITC and anti-human CD25 (clone M-A251) Spark YG™ 581 (left) or anti-human CD4 FITC only (right).

**Description:** CD3 $\epsilon$  is a 20 kD chain of the CD3/T-cell receptor (TCR) complex, which is composed of two CD3 $\epsilon$ , one CD3 $\gamma$ , one CD3 $\delta$ , one CD3 $\zeta$  (CD247), and a T-cell receptor ( $\alpha/\beta$  or  $\gamma/\delta$ ) heterodimer. It is found on all mature T cells, NK T cells, and some thymocytes. CD3, also known as T3, is a member of the immunoglobulin superfamily that plays a role in antigen recognition, signal transduction, and T cell activation.

**Antigen References:**

1. Barclay N, *et al.* 1993. The Leucocyte FactsBook. Academic Press. San Diego.
2. Beverly P, *et al.* 1981. *Eur. J. Immunol.* 11:329.
3. Lanier L, *et al.* 1986. *J. Immunol.* 137:2501.